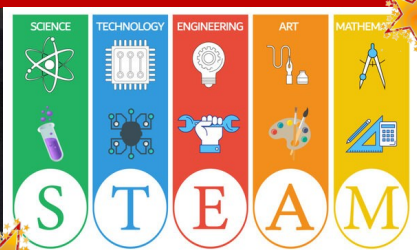


Haverigg Primary News

Friday 8th May 2026



Years 4 & 2 had a little insight into potential careers yesterday when they attended a Millom Cluster STEAM (Science, Technology, Engineering, Art and Maths) event held at the Beggar's Theatre. Employers including as BAE were there to explain different job roles to the children such as Health and Safety, environmental advisors, and construction workers. The children were able to try on protective clothing, build boats to see if they float, construct towers and design their own 'rock tower'.

Team tower building



Congratulations to this week's Lighthouse Winners

Reception Miss Blackburn	Pippa S - for being really polite, listening very carefully and trying really hard in maths. Well done Pippa.
Year 1 Miss Leece	Newt - for your fantastic writing in Drawing Club this week. We have been retelling the story of Zog, and you did this brilliantly! You made sure your sentences made sense, were correctly punctuated and told the story well. Well done Newt!
Year 2 Mrs Redhead	Arthur - Arthur is a little superstar and yesterday really impressed us at the STEAM event at The Beggars theatre. He was really enthusiastic joining in all of the activities and was a great representation for Haverigg school and all the values we hold. Well done Arthur!
Year 3 Mr Knowles	Minnie - for just being Mavellous Minne! She gives 100% to everything she does, presenting her work beautifully, being kind and caring to others and an all round superstar. Well done Minnie.
Year 4 Miss Usher	Evelyn Mck - Evelyn LOVES reading and so wins the lighthouse this week for her positive attitude towards it. She is enthusiastic about books and isn't afraid to challenge herself with tricky texts.. It is lovely to see her persevering with longer books. Well done Evelyn our reading star!
Year 5 Miss Marinovich	Toby - Toby could win this every week because he is such a kind and thoughtful member of our class who is always looking out for his friends and making sure others feel included and supported. Toby never pushes himself forward but he consistently does the right thing and sets a wonderful example to others through his quiet, respectful behaviour. He is a dependable and caring friend who can always be trusted - well done Toby - don't change!
Year 6 Miss Musgrave	Emmy - for always being amazing! She works incredibly hard, she always puts 100% effort into her learning. She is a caring girl who is a good friend to everyone. Thank you.
Music Award Mrs Cullen	Lola - for joining in so well with our advanced brass group and volunteering to improvise on her own.

At Haverigg Primary School we take the safety and welfare of your children very seriously. If you have any concerns regarding the safety and wellbeing of any children at Haverigg school please speak to Mrs Narongchai (our designated safeguarding leader), or Miss Musgrave / Mrs Redhead, (our deputy safeguarding leaders), in her absence.

Mini Marathon Runners

Year 3 have taken part in a Mini Marathon
16 laps of our track = 2.6 miles =
one 10th of a full marathon.



Trying out Tri-golf

YEAR 6 REMINDER

Year 6 Transfer to Secondary School - reminder, if you need to apply for transport for September, please do this before the deadline, which is 31st May 2026. Applications

received after this date may result in long delays and travel provision not being in place ready for September. You will need to apply via the Cumberland Council website.
<https://www.cumberland.gov.uk/schools-and-education/apply-school-transport>



Thank you for all your donations - these were collected today and we will receive payment for this shortly.



Marbleous

House point winners:

Charlie L, Pippa M, Toby, Freya A, Mia, Heidi x 2, Keira x 2, Kieron, Darcie, Evie, Frankie R, Wyatt, Emily, Ellie, Dolly, Fearne, Libby, Frankie G, Harry H, Florence, Sophia R, Xavier, Freddy, Year 6 History Learning, Charlotte and Darcy.

**Well done everyone,
you are all
Marbleous!**

Attendance Matters



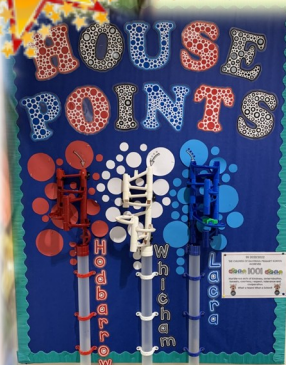
What is considered good attendance? Regular and punctual attendance is essential for effective learning, promoting positive relationships and developing good attitudes to education. **A child's attendance at school is expected to be 96% and above.** Anything that is below this needs to be addressed by school to ensure attendance improves. We need to ensure that all children attend school regularly as it is important for friendships and academic progress/success.

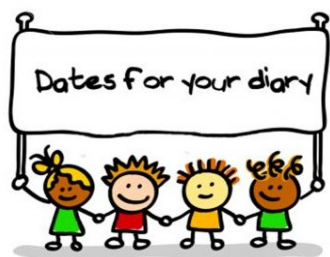
Key daily timings:

- 8:50 to 9:00 → Register takes place
- After 9:00 → Late mark in register
- After 9:30 → Unauthorised absence

Weekly Attendance Report

Reception	96%
Year 1	99%
Year 2	100%
Year 3	89%
Year 4	99%
Year 5	97%
Year 6	98%





HAVERIGG PRIMARY SCHOOL

DIARY DATES

(updated 13th February 2026)

February 2026

Friday 6th	Young Voices choir to Manchester
9 th – 12th	Scholastic Book Fair in school
Friday 13th	School finishes for February half term
Monday 23rd	Back to school
Friday 27th	KS1 Rugby taster session in school Year 4 Cyclewise training in school

March 2026

Thursday 5th	World Book Day – open theme
Friday 13th	Tempest Photography – class photo's
Monday 16 th	Parent / teacher meetings
Wednesday 25th	Easter Raffle drawn
Friday 27th	End of term (normal finish time)

April 2026

Monday 13th	Summer term starts Year 4 commence 2-week daily swimming lessons
Thursday 16th	National Offer Day – Reception 2026 places
Tuesday 21st	NHS – Rec and Yr 6 height/weight screening
Friday 24th	FoHS School Disco

May 2026

Monday 4th	Bank holiday
Friday 8th	Bag 2 School Collection
Monday 11 th – 14th	SAT's week
Friday 22nd	School finishes for May half term

June 2026

Monday 1st	Back to school
Wednesday 3 rd – 5th	Year 6 London residential trip
Thursday 18th	Sports Day
Friday 19th	Reserve date for Sports Day Year 5 day at Millom school

July 2026

Friday 10th	Presentation Assemblies FoHS School Disco
Friday 17th	End of term (1.15pm finish)

Haverigg School 3 Week Menus from 20th April 2026



Week 1		
Monday	Pasta Bolognese, Garlic Bread and Sweetcorn	Chocolate Crunch and Vanilla Sauce
Tuesday	Chunky Chicken in a Tomato Sauce with Rice and Naan Bread	Meringue and Fruit Salad
Wednesday	Roast Pork, Yorkshire Pudding, Mash / Pasta and Vegetables	Gingerbread and Custard
Thursday	Battered or Plain Chicken Fillet Baguette with Diced Potatoes, Carrot and Cucumber Sticks	Victoria Sponge Cake
Friday	Fishy Ships, Chips, Baked Beans / Peas	Fruit Jelly and Ice-cream
	Daily: Jacket Potato with Butter/Cheese/Beans/Tuna OR Sandwich – Cheese/Ham/Tuna/Salad	Daily: Fruit Yoghurts Fresh Fruit
Week 2		
Monday	Mild Chicken Korma, Rice and Naan Bread	Lemon Drizzle Cake
Tuesday	Arrabiata Pasta Sauce (cheese optional), Crusty Bread, and Green Salad	Shortbread and Drink of Milk
Wednesday	Roast Beef, Yorkshire Pudding, Mash / Pasta and Vegetables	Chocolate Pear Marble Cake and Custard
Thursday	Pizza Wrap, Red Pesto Pasta and Sweetcorn	Melting Moment Biscuit
Friday	Fishy Ships, Chips, Beans / Peas	Waffle with Fruit Salad and Ice-cream
	Daily: Jacket Potato with Butter/Cheese/Beans/Tuna OR Sandwich – Cheese/Ham/Tuna/Salad	Daily: Fruit Yoghurts Fresh Fruit
Week 3		
Monday	Sausage Baguette, Wedges, Carrot and Cucumber Sticks	Iced Sponge Cake
Tuesday	Pasta in a sauce (cheese optional), Garlic Bread and Salad	Scotch Pancake with Bananas and Ice-cream
Wednesday	Roast Chicken with Stuffing, Mash / Pasta and Vegetables	Chocolate Orange Cake and Custard
Thursday	Meatballs in Gravy, Mash / Pasta and Sweetcorn	Fruit Scone with Jam (optional)
Friday	Fishcake, Chips, Beans / Peas	Chocolate Chip Cookie and Milk
	Daily: Jacket Potato with Butter/Cheese/Beans/Tuna OR Sandwich – Cheese/Ham/Tuna/Salad	Daily: Fruit Yoghurts Fresh Fruit

Please note: any children with a food intolerance can still order the main meal and pudding. If applicable, the kitchen staff will adjust the meal according to their intolerance e.g. dairy.

Thank you

HAVERIGG PRIMARY SCHOOL

2026

JANUARY						
S	M	T	W	Th	F	S
				1	2	3
4	5	6	7	8	9	10
11	12	13	14	15	16	17
18	19	20	21	22	23	24
25	26	27	28	29	30	31

FEBRUARY						
S	M	T	W	Th	F	S
1	2	3	4	5	6	7
8	9	10	11	12	13	14
15	16	17	18	19	20	21
22	23	24	25	26	27	28

MARCH						
S	M	T	W	Th	F	S
1	2	3	4	5	6	7
8	9	10	11	12	13	14
15	16	17	18	19	20	21
22	23	24	25	26	27	28
29	30	31				

APRIL						
S	M	T	W	Th	F	S
			1	2	3	4
5	6	7	8	9	10	11
12	13	14	15	16	17	18
19	20	21	22	23	24	25
26	27	28	29	30		

MAY						
S	M	T	W	Th	F	S
					1	2
3	4	5	6	7	8	9
10	11	12	13	14	15	16
17	18	19	20	21	22	23
24	25	26	27	28	29	30
31						

JUNE						
S	M	T	W	Th	F	S
	1	2	3	4	5	6
7	8	9	10	11	12	13
14	15	16	17	18	19	20
21	22	23	24	25	26	27
28	29	30				

JULY						
S	M	T	W	Th	F	S
			1	2	3	4
5	6	7	8	9	10	11
12	13	14	15	16	17	18
19	20	21	22	23	24	25
26	27	28	29	30	31	

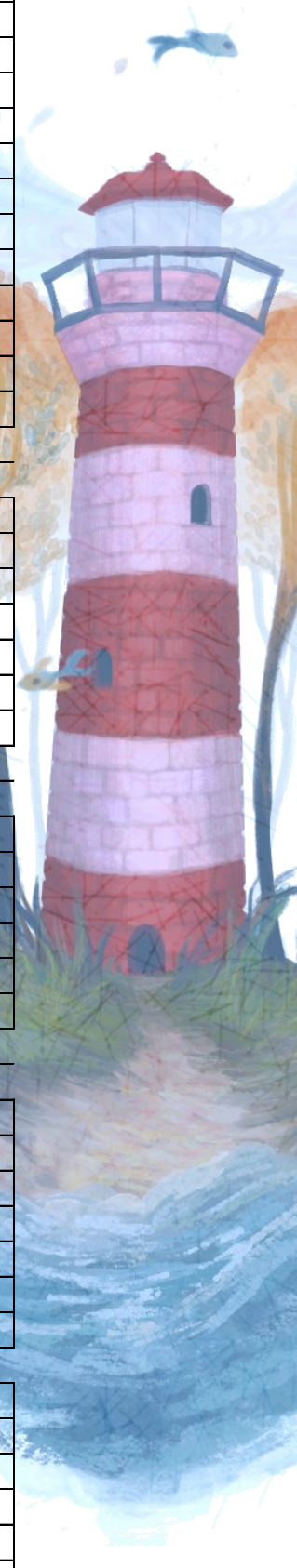
AUGUST						
S	M	T	W	Th	F	S
						1
2	3	4	5	6	7	8
9	10	11	12	13	14	14
16	17	18	19	20	21	22
23	24	25	26	27	28	29
30	31					

SEPTEMBER						
S	M	T	W	Th	F	S
		1	2	3	4	5
6	7	8	9	10	11	12
13	14	15	16	17	18	19
20	21	22	23	24	25	26
27	28	29	30			

OCTOBER						
S	M	T	W	Th	F	S
				1	2	3
4	5	6	7	8	9	10
11	12	13	14	15	16	17
18	19	20	21	22	23	24
25	26	27	28	29	30	31

NOVEMBER						
S	M	T	W	Th	F	S
1	2	3	4	5	6	7
8	9	10	11	12	13	14
15	16	17	18	19	20	21
22	23	24	25	26	27	28
29	30					

DECEMBER						
S	M	T	W	Th	F	S
		1	2	3	4	5
6	7	8	9	10	11	12
13	14	15	16	17	18	19
20	21	22	23	24	25	26
27	28	29	30	31		



Inset

Holiday dates Spring Term starts 5th January 2027



HAVERIGG PRIMARY SCHOOL

Atkinson Street

Haverigg

Cumbria LA18 4HA

Tel: 01229 772502

e-mail: admin@haverigg.cumbria.sch.uk

www.haverigg.cumbria.sch.uk

Headteacher: Mrs M Narongchai

Attendance matters

24th October 2025

Dear parents and carers,

This academic year we have once again had increasing numbers of families taking children out of school for holidays during term time. As you will all be aware, schools must consider enforcement action if a child/young person has 10 or more unauthorised sessions (equivalent to five days). While schools and local authorities will generally offer support to improve attendance first, persistent unauthorised absences or term-time holidays may result in a Fixed Penalty Notice or prosecution.

As part of our ongoing attendance monitoring and in line with the Cumberland attendance strategy, we will now be passing on attendance casefiles to the local authority where we feel the threshold has been met for fixed term penalty.

Reminder of Attendance expectations:

- Ensure your child/young person attends every day the school is open; except when a legal reason applies
- Notify the school as soon as possible when your child/young person is unexpectedly absent
- Book any medical appointments around the school day where possible
- Only request leave of absence in exceptional circumstances and do so in advance (please note: family holidays are not generally considered exceptional circumstances and all leave of absence requests are considered at the headteacher's discretion)

Please also be aware that taking your child out of school after registration in the afternoon will still count as an unauthorised session as they are not in school during the afternoon.

Head teacher

CHANGES TO FINES FOR UNAUTHORISED ABSENCES

With the introduction of the new National Framework for penalty notices, the following changes will come into force for fixed penalty notice fines issued for unauthorised absences recorded by schools after 19 August 2024.

Fixed Penalty Notices are issued in lieu of prosecution. The decision on whether to issue an FPN or prosecute rests with the Local Authority and is made on a case-by-case basis.

National threshold

There will be a single, consistent national threshold for when a penalty notice must be considered by all schools in England of 10 sessions (usually equivalent to five full school days) of unauthorised absence within a rolling 10 school week period.

For example: a five-day holiday would meet the national threshold.

The 10-school week period can span different terms or school years.

Who may be fined?

Penalty notice fines are issued to each parent who allows their child/young person to be absent from school.

For example: three siblings absent for term time leave would result in each parent who allowed the holiday receiving three separate fines.

First offence

The first time a penalty notice is issued for an unauthorised term time holiday, the fine amount will be:

£80 per parent, per child/young person if paid within 21 days, increasing to £160 if paid between days 22-28.

Second offence (within three years)

The second time a penalty notice is issued for unauthorised absence, the amount will be: £160 per parent (who allowed the holiday), per child/young person, payable within 28 days.

Third offence and any further offences (within three years)

The third time an offence is committed, a penalty notice will not be issued and local authorities will need to consider other available measures to address the absence concerns.

This may mean that cases are presented before a Magistrate's Court.

Prosecution can result in criminal records and fines of up to £2,500 and/or a term of imprisonment not exceeding three months.

Please note any monies collected through fines come back to Cumberland Council to facilitate attendance support and not to schools.



POMS Cluster Attendance Agreement 2025 - 2026

Guidance on authorised term-time pupil absence

The Education Regulations 2013 [aka, the Regulations] which came into force on 1 September 2013, made it clear that headteachers may not grant any leave of absence during term time unless "exceptional circumstances" prevail. The regulations also state that headteachers should determine the number of school days a pupil can be away from school if they grant a leave request because of "exceptional circumstances".

The fundamental principles for defining "exceptional circumstances" are that they are 'rare, significant, unavoidable and short'.

POMS cluster Headteachers have worked together to agree some guiding principles for headteachers to consider when families request absence during term-time. This will ensure consistency across the cluster and ensure all schools are sending the same message surrounding the importance of attendance at school.

Guiding Principles

1. Term times are for education. Children and families have 175 days off school to spend time together, including weekends and school holidays. Headteachers will rightly prioritise attendance. The default school policy should be that absences will not be granted during term time apart from in "exceptional circumstances".
2. The decision to authorise a pupil's absence is wholly at the headteacher's discretion based on their assessment of and circumstances of each individual request. POMS Headteachers have worked collaboratively to agree a shared approach. Schools in the POMS cluster will follow these agreed principles.
3. If an event can be reasonably scheduled outside of term time, then it will not be authorised. Holidays are, therefore, not considered exceptional circumstances.
4. Absence from school to visit seriously-ill relatives or for bereavement of a close family member are usually considered to amount to 'exceptional circumstances', but for the funeral service not for extended leave.
5. Absences for important religious observances are often considered, but only for the ceremony and not for extended leave. This is intended for one-off situations rather than regular or recurring events
6. Schools may wish to take the needs of the families of service personnel into account if they are returning from long operational tours that prevent contact during scheduled holiday time.
7. Whilst as school settings we must make reasonable adjustments for pupils with special educational needs or disabilities in school time. Regarding attendance, we work closely with our colleagues from our local special schools. In line with their guidance, we would not consider requests that are based on holidays during quieter times.
8. Families may need time together to recover from a trauma or crisis.
9. POMS schools will consider a pupil's historical record of attendance when making absence-related decisions
10. It is important to note that headteachers can determine the length of the authorised absence as well as whether an absence is authorised.
11. Absence will only be authorised where proper request procedures have been followed and the permission given.
12. Tickets and/or other travel arrangements should not be booked prior to discussion with and agreement of the school.
13. Parents and Carers should not confuse telling the school about an absence with having permission.
14. Whether alternative care arrangements have been considered by the parent to limit the time away from school.
15. The impact on any interventions, assessments or referrals being undertaken with the child or family, for example, family support, social care assessments, CAMHS, SEN.
16. The potential impact that the absence will have on the child.

This guidance has been agreed by all schools in the POMS (Partnership of Millom Schools) cluster;

Parkview Nursery School
Millom Infant School
Black Combe Junior School
Haverigg Primary School
St James' Catholic Primary School
Thwaites Nursery & Primary School
Captain Shaw Nursey & Primary School



Healthy Packed Lunch Policy



How to pack a well-balanced lunch box - focus on the food groups

To be in-line with the School Food Standards set by the Department for Education, we feel this is a very reasonable packed lunch policy and one which we would like all parents to work towards achieving **one small change at a time**. We do understand that some children struggle with change but, the healthier choices you can gradually make, the better your child's health will be.

Packed lunches should include:

- At least one portion of fruit and one portion of vegetables every day.
- Meat, fish, eggs, or a non-dairy protein (e.g. lentils, kidney beans, chickpeas, houmous or falafel) every day.
- Oily fish, such as salmon, at least once every three weeks.
- A starchy food such as any type of bread, pasta, rice, couscous, noodles, potatoes or another cereal every day.
- A dairy food such as milk, cheese, yoghurt, fromage frais or custard every day.
- A drink of water, fruit juice or smoothie (maximum portion 150ml), or semi-skimmed milk or skimmed milk, yoghurt or another milk drink.

Packed lunches can occasionally include:

- Meat products such as sausage rolls, individual pies, corned meat and sausages.
- Cakes and biscuits - but encourage your child to eat these as part of a meal and be mindful of appropriate portion sizes.

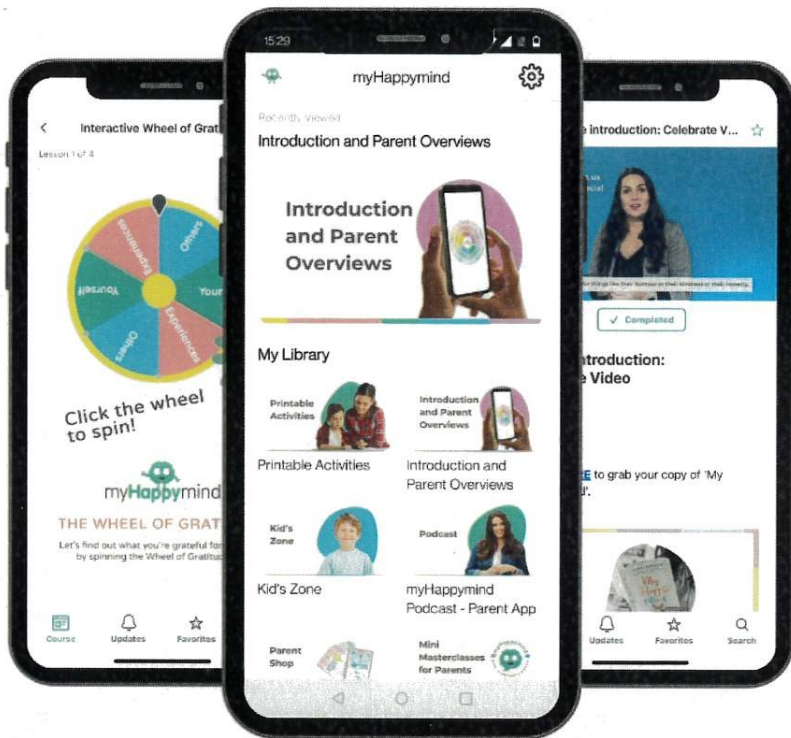
Packed lunches should not include:

- Nuts or nut butters (we do have children in school with allergies)
- Salty snacks such as crisps.
- Confectionery such as chocolate bars, chocolate-coated cereal bars, processed fruit bars and sweets.
- Sugary soft drinks, such as squash and fizzy drinks.





Download your FREE myHappy mind Parent App

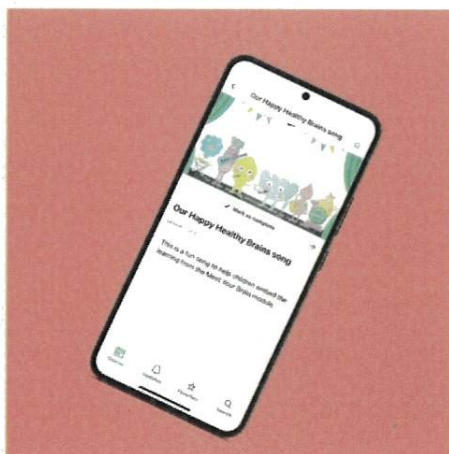


...An online resource to support you and your family to learn more about how you can use myHappy mind to support your child.



myHappy mind for Parents

Exclusively for parents with children at a myHappy mind School or Nursery.



Learn all about what your children are learning in school

myHappy mind Parent App

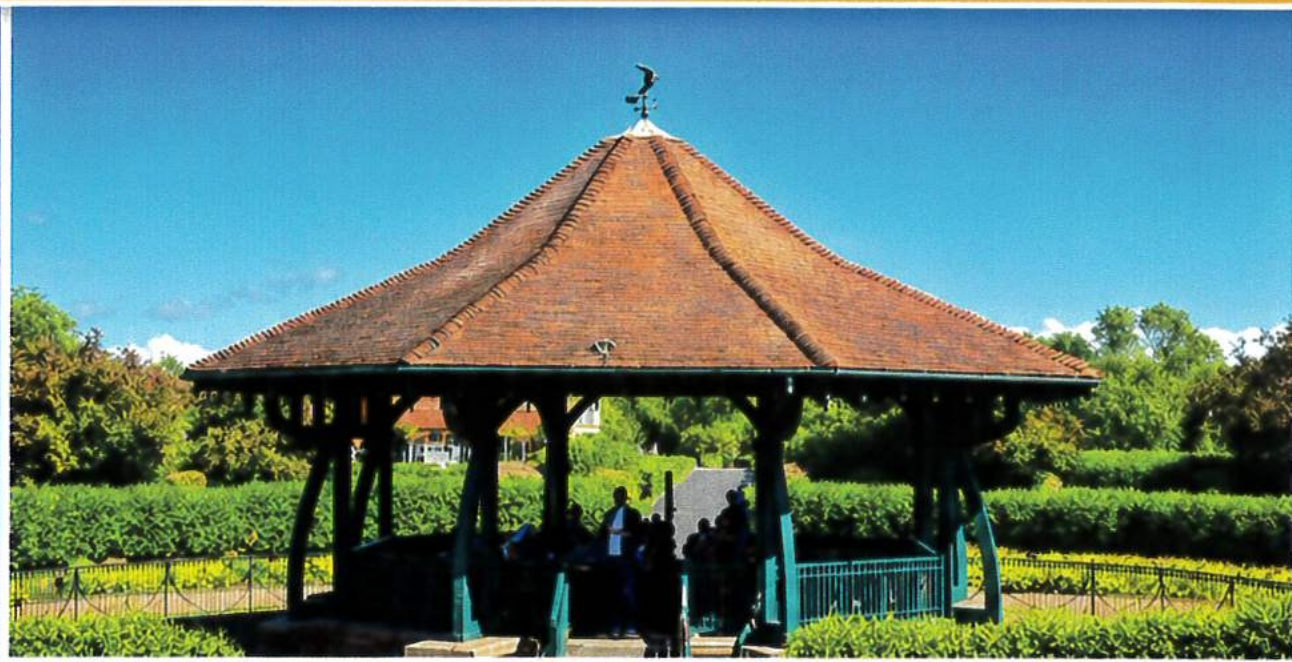
YOU WILL NEED THIS AUTHENTICATION CODE TO SIGN UP

112157

BRASS IN BARROW BANDSTAND

Summer 2026 Concert Series

Sundays • 2~4pm • Barrow Park Bandstand



Programme

31 May

Dalton Town Band

14 June

South Cumbria Brass Band

21 June

Flookburgh Band

28 June

Holborn Hill Royal
Brass Band Juniors

5 July

Askam Town Silver Band

12 July

Ulverston Town Band

Bring a chair. Bring a friend. Enjoy the music.

Sponsored by Barrow Town Council

Join All Stars & Dynamos at Haverigg CC

Sign Up for Youth Cricket – All Stars (ages 5-8) & Dynamos (ages 8-11)



All Stars sessions: Wednesdays 5-6pm, 20th May to 8th July inclusive.

Dynamos sessions: Wednesdays 6:15-7:15pm, 20th May to 8th July inclusive.

Venue: Haverigg CC.

Course link: ecb.co.uk/play/all-stars (enter town as Haverigg to find the courses)

SUN 10 MAY | 12 - 3PM
MILLOM PALLADIUM THEATRE

**Millom Music School and
RNCM Engage West Cumbria**

Millom Flexi-Band Sessions

An exciting opportunity for players aged 8+ from across West Cumbria to develop creative, music, and technical skills in a mixed ensemble setting.

All instruments, including woodwind, brass, strings, keys, and guitars, are welcome!

To sign up, scan the QR code or contact Millom Music School:
T 07749 055292 | E millommusicsschool@outlook.com



RNCM
ROYAL NORTHERN
COLLEGE of MUSIC

Mythical World
Ceramic Painting

Thursday 28th May
11-1pm

Beggar's Theatre, Millom

£17 inc bisque item, glazes
and professional firing



The
**Beggar's
Theatre**

MILLOM STRIDERS PRESENTS



11K & 5K
EVENTS
+ FUN RUN

RUN EDGE

THE LAKE DISTRICT COAST

MILLOM
RUGBY UNION
LA18 4GY

31st

MAY
11 AM

ENTER AT NIFTYENTRIES.COM

ENTRIES WILL BE ACCEPTED ON THE DAY

AFFILIATED ENTRY £18

UNAFFILIATED ENTRY £20

MIN AGE REQUIREMENT - (12yrs - 5K) (16yrs - 11K)

GREAT PRIZES FOR ALL FINISHERS